



# JENDOCO REAL ESTATE

## Parkway West Business Park

**020 Parkway View Drive**

**11,720 Total Square Feet (Optional Area up to 55,500 SF)**

**5,969 Square Feet of Finished Office**



### MAIN FEATURES

- Clear Height: 18ft. Above finished floor to underside of structural steel
- Exterior: Insulated wall panel
- Glass wall system at offices

### UTILITIES

- Electric: 120/208 volt, three phase four wire
- Natural Gas: Equitable
- Water & Sewage: Robinson Twp.

### MISCELLANEOUS

- Ample truck access and maneuvering
- 4 ft. high loading docks
- 24 hour, 7 day a week access

**NAIOP**  
COMMERCIAL REAL ESTATE  
DEVELOPMENT ASSOCIATION  
PITTSBURGH CHAPTER



Contact Bob Lloyd - T 412-361-4509 F 412-361-4790 - Internet [www.jendoco-re.com](http://www.jendoco-re.com)

All information furnished regarding properties for rent or sale are subject to errors, omissions, change of price or rental and change or withdraw without notice. Rental terms, all dimensions and specifications are approximate and subject to change without notice.



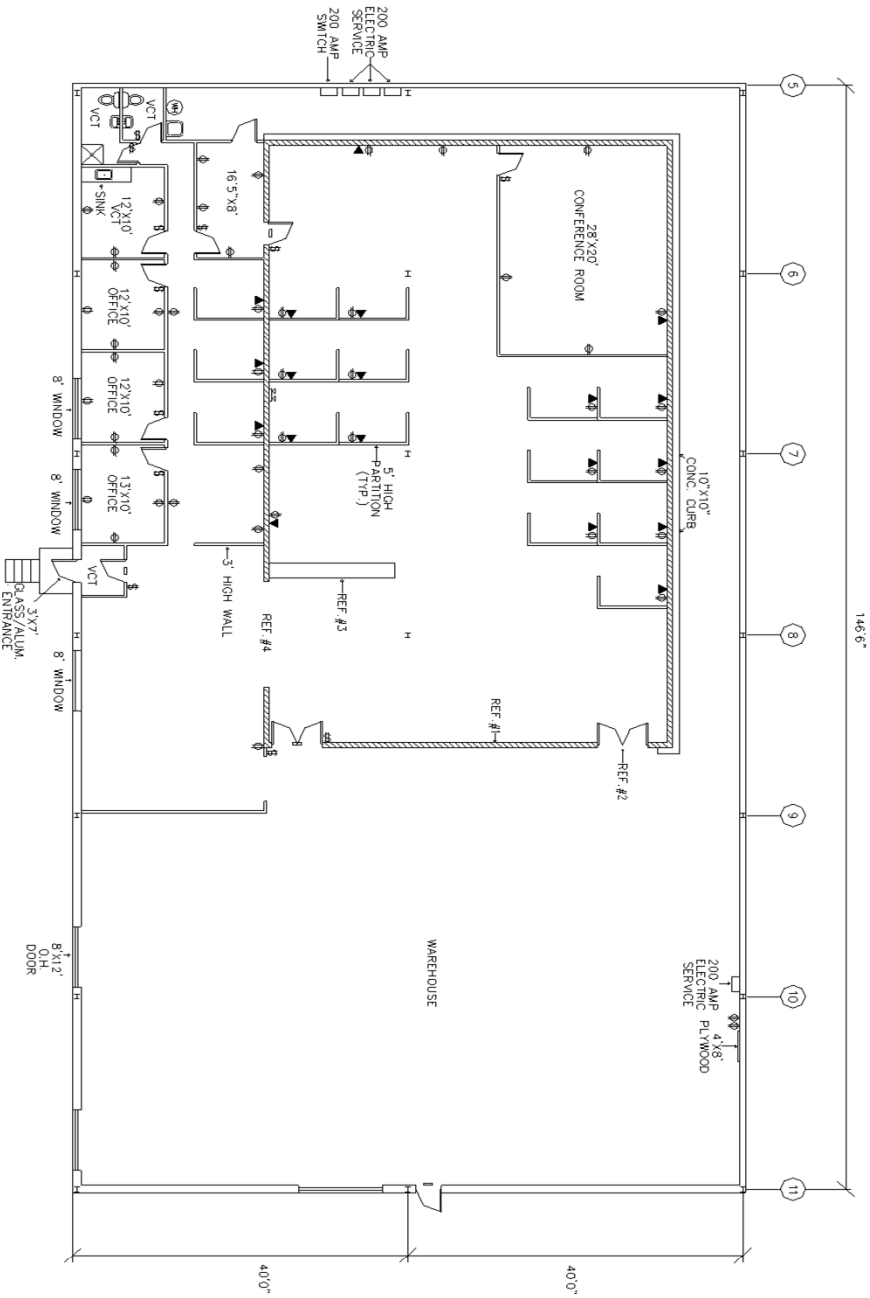
2000 Lincoln Road  
Pittsburgh, PA 15235

**JENDOCO REAL ESTATE**  
*CAD Design Team*

Phone: (412) 361 - 4509  
Fax: (412) 361 - 4790

ALL INFORMATION ON THIS DRAWING MUST BE  
FIELD VERIFIED FOR ACCURACY. OWNER ASSUMES  
NO LIABILITY FOR INFORMATION UTILIZED FROM  
THIS DOCUMENT.

11,720 SQUARE FEET TOTAL AREA  
5,969 SQUARE FEET FINISHED AS OFFICE  
5,751 SQUARE FEET WAREHOUSE



- REFERENCES:
1. 1 1/2" HIGH, 8" C.M.U. BLOCK PAINTED WALLS.
  2. COLOR TO BE CHOSEN BY TENANT PW-401.
  3. RELOCATE 15" COULDE FROM PW-401.
  4. OPENING IS TO BE AT LEAST 12" 14" WILL BE USED IF POSSIBLE.

NOTES:  
1. TENANT IS RESPONSIBLE FOR ALL VOICE DATA LINES.

- KEY:
- ⊕ SWITCH
  - ⊕ QUAD OUTLET
  - ⊕ DUPLEX OUTLET
  - ⊕ THERMOSTAT
  - ⊕ EMERGENCY LIGHT
  - ⊕ ILLUMINATED EXIT

PARKWAY WEST BUSINESS PARK		SCALE: 1/8"=1'	APPROVED BY:	DRAWN BY: DET
		DATE: 1/9/01	PARKWEST ASSOC.	REVISED 2/21/01
NORTH		PW-020		

