



JENDOCO REAL ESTATE

Parkway West Business Park

208 Parkway View Drive

3,960 Total Square Feet

560 Square Feet of Finished Office



MAIN FEATURES

- Clear Height: 16ft. Above finished floor to underside of structural steel
- Exterior: Insulated wall panel
- Glass wall system at offices

UTILITIES

- Electric: 120/208 volt, three phase four wire
- Natural Gas: Equitable
- Water & Sewage: Robinson Twp.

MISCELLANEOUS

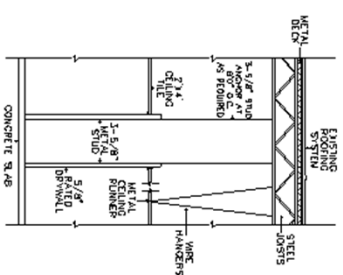
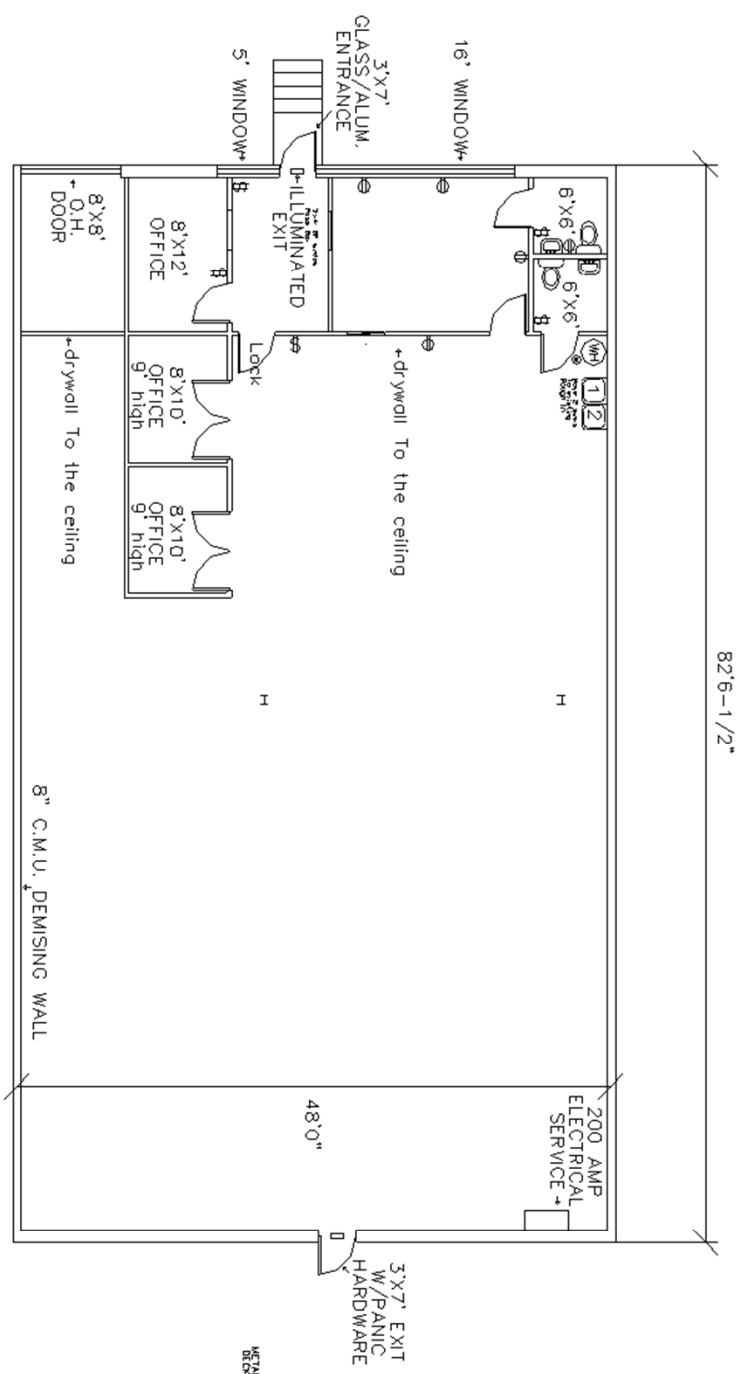
- Ample truck access and maneuvering
- 4 ft. high loading docks
- 24 hour, 7 day a week access

NAIOP
COMMERCIAL REAL ESTATE
DEVELOPMENT ASSOCIATION
PITTSBURGH CHAPTER



Contact Bob Lloyd - **T** 412-361-4509 **F** 412-361-4790 - **Internet** www.jendoco-re.com

All information furnished regarding properties for rent or sale are subject to errors, omissions, change of price or rental and change or withdraw without notice. Rental terms, all dimensions and specifications are approximate and subject to change without notice.




TYPICAL WALL SECTION

3960 SQUARE FEET TOTAL AREA
560 SQUARE FEET FINISHED AS OFFICE

- CONSTRUCTION NOTES:
- 1) Pass Boxes to be provided by Tenant
 - 2) Locks for doors in Lobby + main entrance provided by Tenant

ALL INFORMATION ON THIS DRAWING MUST BE
FIELD VERIFIED FOR ACCURACY. OWNER ASSUMES
NO LIABILITY FOR INFORMATION UTILIZED FROM
THIS DOCUMENT.



JENDOCO REAL ESTATE
CAD Design Team

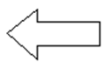
2000 Lincoln Road
Pittsburgh, PA 15235

Phone: (412) 361 - 4509
Fax: (412) 361 - 4790

PARKWAY WEST BUS. PARK

SCALE: 1/8"=1'	APPROVED BY: SAMDOZ INC.	DRAWN BY: PB
DATE: 5/24/94		REVISED 6/28/11

PW-208



NORTH