



JENDOCO REAL ESTATE

TRY OUR
NEW WEBVISION

jendoco-re.com

Parkway West Business Park

511 Parkway View Drive

2,940 Total Square Feet

1,248 Square Feet of Finished Office



MAIN FEATURES

- Clear Height: 16ft. Above finished floor to underside of structural steel
- Exterior: Insulated wall panel
- Glass wall system at offices

UTILITIES

- Electric: 120/208 volt, three phase four wire
- Natural Gas: Equitable
- Water & Sewage: Robinson Twp.

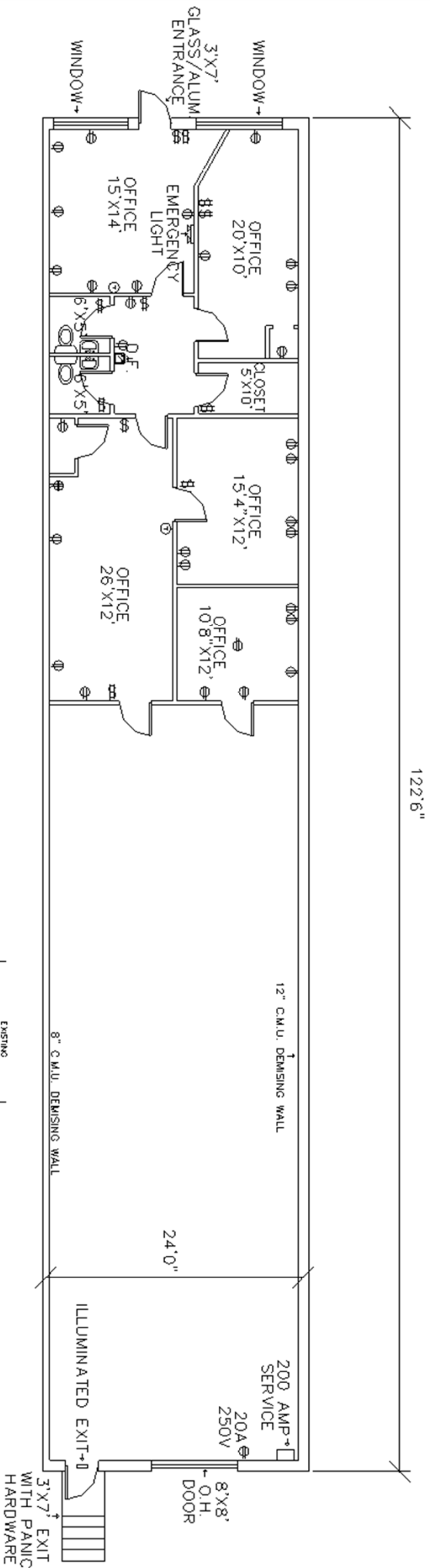
MISCELLANEOUS

- Ample truck access and maneuvering
- 4 ft. high loading docks
- 24 hours, 7 day a week access

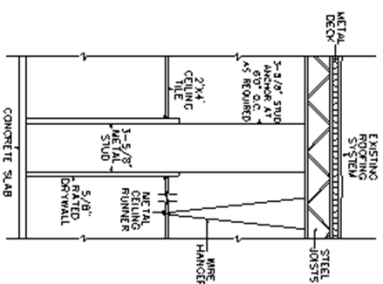


Contact Bob Lloyd - **T** 412-361-4509 **F** 412-361-4790 - **Internet** www.jendoco-re.com

All information furnished regarding properties for rent or sale are subject to errors, omissions, change of price or rental and change or withdraw without notice. Rental terms, all dimensions and specifications are approximate and subject to change without notice.



2,940 SQUARE FEET TOTAL AREA
1,248 SQUARE FEET FINISHED OFFICE



ALL INFORMATION ON THIS DRAWING MUST BE
FIELD VERIFIED FOR ACCURACY. OWNER ASSUMES
NO LIABILITY FOR INFORMATION UTILIZED FROM
THIS DOCUMENT.

JENDOCO REAL ESTATE

CAD Design Team

2000 Lincoln Road
Pittsburgh, PA 15235

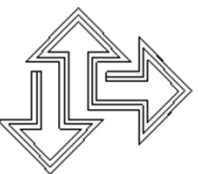
Phone: (412) 361 - 4509
Fax: (412) 361 - 4790

PARKWAY WEST BUSINESS PARK

SCALE: 1/8" = 1'0" APPROVED BY: SAMDOZ INC. DRAWN BY: RVL

REVISIED

PW-511



NORTH