



JENDOCO REAL ESTATE

TRY OUR new website

jendoco-re.com

North Versailles Business Park

1081 Third Street

9,489 Total Square Feet

2,006 Square Feet of Finished Office



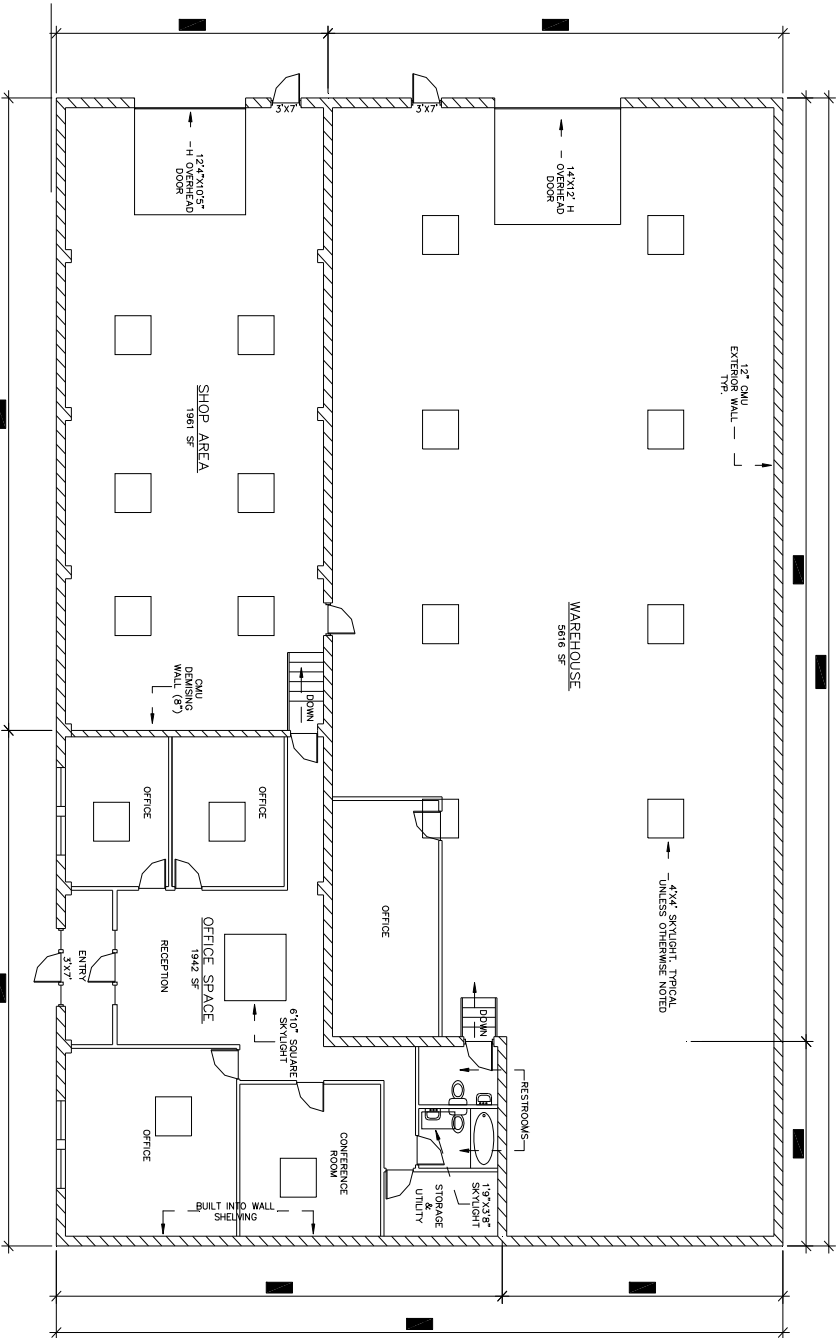
- 2,006 SF of office
- 5,490 SF of warehouse + 1,193 SF of Shop
- Free Parking with 24/7 access
- Custom Built to requirements
- 6 miles to I-376 / I-76 / B22
- 12'x12' drive-in doors

NAIOP
COMMERCIAL REAL ESTATE
DEVELOPMENT ASSOCIATION
PITTSBURGH CHAPTER

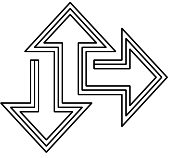


Contact Bob Lloyd - T 412-361-4509 F 412-361-4790 - Internet www.jendoco-re.com

All information furnished regarding properties for rent or sale are subject to errors, omissions, change of price or rental and change or withdraw without notice. Rental terms, all dimensions and specifications are approximate and subject to change without notice.



ALL INFORMATION ON THIS DRAWING MUST BE
 CONSIDERED AS PRELIMINARY. THE DRAWING
 IS NOT TO BE USED FOR CONSTRUCTION UNLESS
 THIS DOCUMENT IS USED AS A REFERENCE.



2000 Lincoln Road
 Pittsburgh, PA 15235

JENDOCCO REAL ESTATE
 CAD Design Team

Phone: (412) 361 - 4509
 Fax: (412) 361 - 4790

NORTH VERSAILLES 1083		THIRD ST.	
SCALE: 3/32"=1'	APPROVED BY:	DRAWN BY: VAR	
DATE: 10/1/14	UDIN LP	REVISED	
NV-1081			

NORTH

