

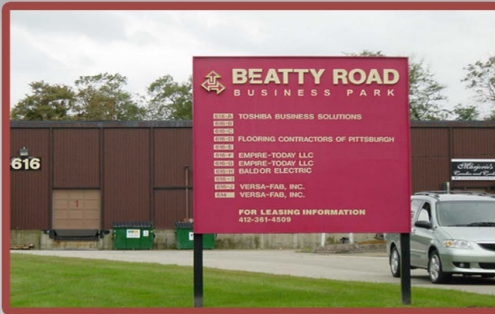
JENDOCO REAL ESTATE

TRY OUR
NEW WEBVISION

jendoco-re.com

Beatty Road Business Park 616 H Beatty Road

5,880 Total Square Feet
648 Square Feet of Finished Office



MAIN FEATURES

- Clear Height: 17ft. Above finished floor to underside of structural steel
- Exterior: Insulated wall panel
- Glass wall system at offices

UTILITIES

- Electric: 120/208 volt, three phase four wire
- Natural Gas: Columbia Gas
- Water & Sewage: Monroeville.

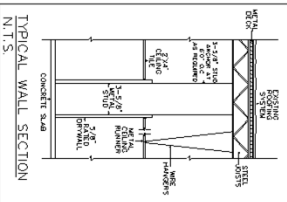
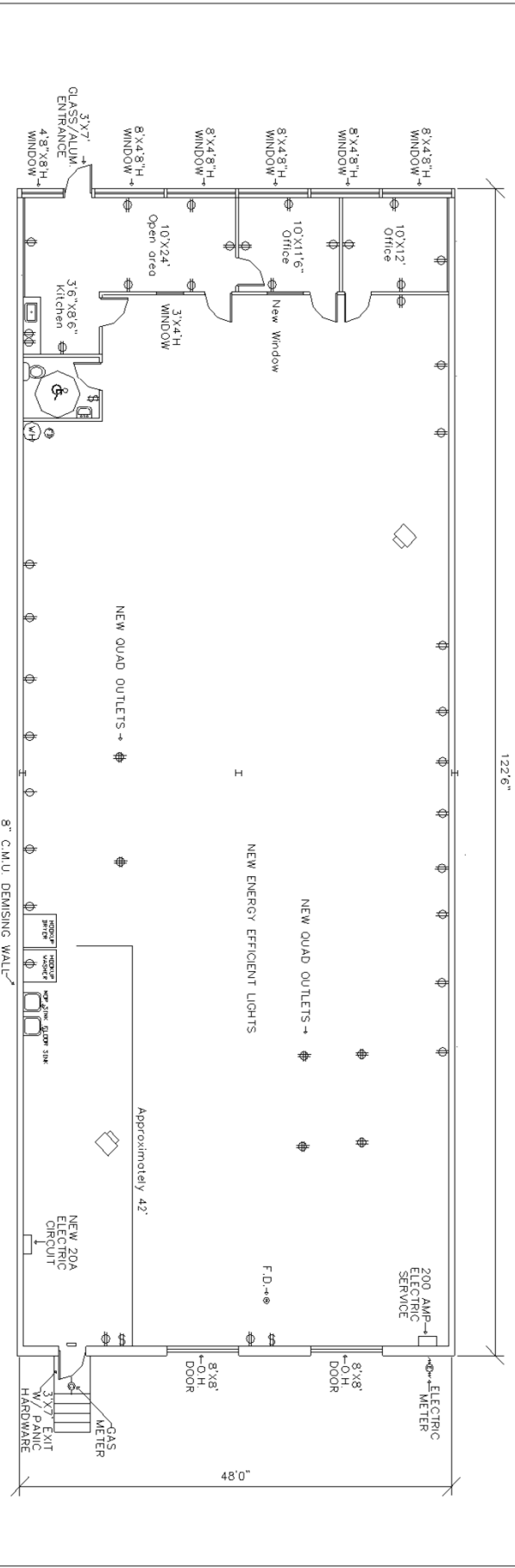
MISCELLANEOUS

- Ample truck access and maneuvering
- 4 ft. high loading docks and overhead door at grade
- 24 hour, 7 day a week access



Contact Bob Lloyd - T 412-361-4509 F 412-361-4790 - Internet www.jendoco-re.com

All information furnished regarding properties for rent or sale are subject to errors, omissions, change of price or rental and change or withdraw without notice. Rental terms, all dimensions and specifications are approximate and subject to change without notice.



ALL INFORMATION ON THIS DRAWING MUST BE FIELD VERIFIED FOR ACCURACY. OWNER ASSUMES NO LIABILITY FOR INFORMATION UTILIZED FROM THIS DOCUMENT.

580 SQUARE FEET TOTAL AREA
648 SQUARE FEET FINISHED AS OFFICE



JENDOCO REAL ESTATE
CAD Design Team
2000 Lincoln Road
Pittsburgh, PA 15235
Phone: (412) 361 - 4509
Fax: (412) 361 - 4790

BEATTY ROAD BUSINESS PARK

NORTH

| | | |
|----------------|----------------------|--------------|
| SCALE: 1/8"=1' | APPROVED BY: UDIN LP | DRAWN BY: PB |
| DATE: 6/5/14 | REVISIED 9/16/14 | |

- KEY:
- \$ SWITCH
 - ⊕ QUAD OUTLET
 - ⊕ DUPLEX OUTLET
 - ⊕ THERMOSTAT
 - ☒ EMERGENCY LIGHT
 - ☐ ILLUMINATED EXIT