



# JENDOCO REAL ESTATE

TRY OUR  
NEW WEBVISION

[jendoco-re.com](http://jendoco-re.com)

**Parkway West Business Park**  
**1114 Parkway View Drive**  
**4,737 Total Square Feet**  
**2,400 Square Feet of Finished Office**



#### MAIN FEATURES

- Clear Height: 16ft. Above finished floor to underside of structural steel
- Exterior: Insulated wall panel
- Glass wall system at offices

#### UTILITIES

- Electric: 120/208 volt, three phase four wire
- Natural Gas: Equitable
- Water & Sewage: Robinson Twp.

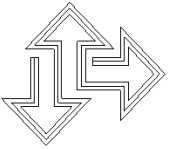
#### MISCELLANEOUS

- Ample truck access and maneuvering
- 4 ft. high loading docks
- 24 hour, 7 day a week access



Contact Bob Lloyd - T 412-361-4509 F 412-361-4790 - Internet [www.jendoco-re.com](http://www.jendoco-re.com)

All information furnished regarding properties for rent or sale are subject to errors, omissions, change of price or rental and change or withdraw without notice. Rental terms, all dimensions and specifications are approximate and subject to change without notice.



2000 Lincoln Road  
Pittsburgh, PA 15235

Phone: (412) 361 - 4509  
Fax: (412) 361 - 4790

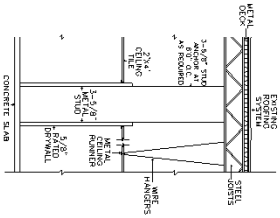
**JENDOCO REAL ESTATE**  
*CAD Design Team*

**PARKWAY WEST BUS. PARK**

SCALE: 1/8"=1'  
DATE: 12/7/93  
APPROVED BY: SAMDOZ INC.  
DRAWN BY: GS  
REVISED 7/19/05

PWBP-1114

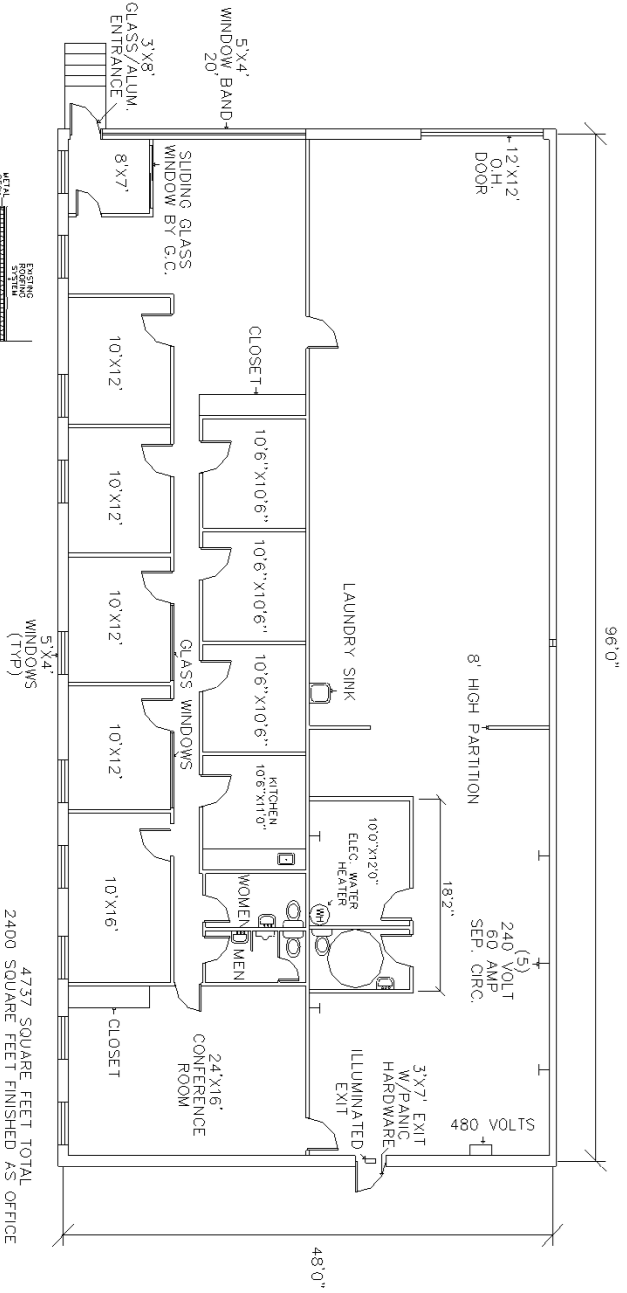
TYPICAL WALL SECTION



CONSTRUCTION NOTES  
RESTROOMS ARE BOTH 10'X5'-6"

ALL INFORMATION ON THIS DRAWING MUST BE FIELD VERIFIED FOR ACCURACY. OWNER ASSUMES NO LIABILITY FOR INFORMATION UTILIZED FROM THIS DOCUMENT.

4737 SQUARE FEET TOTAL  
2400 SQUARE FEET FINISHED AS OFFICE



- KEY:
- \$ SWITCH
  - ⊕ QUAD OUTLET
  - ⊕ DUPLEX OUTLET
  - ⊙ THERMOSTAT
  - ⊕ EMERGENCY LIGHT
  - ⊕ ILLUMINATED EXIT