

# JENDOCO REAL ESTATE

## Parkway West Business Park

**1201&1204 Parkway View Drive**

**9,300 Total Square Feet**

**2,389 Square Feet of Finished Office**



### MAIN FEATURES

- Clear Height: 16ft. Above finished floor to underside of structural steel
- Exterior: Insulated wall panel
- Glass wall system at offices

### UTILITIES

- Electric: 120/208 volt, three phase four wire
- Natural Gas: Equitable
- Water & Sewage: Robinson Twp.

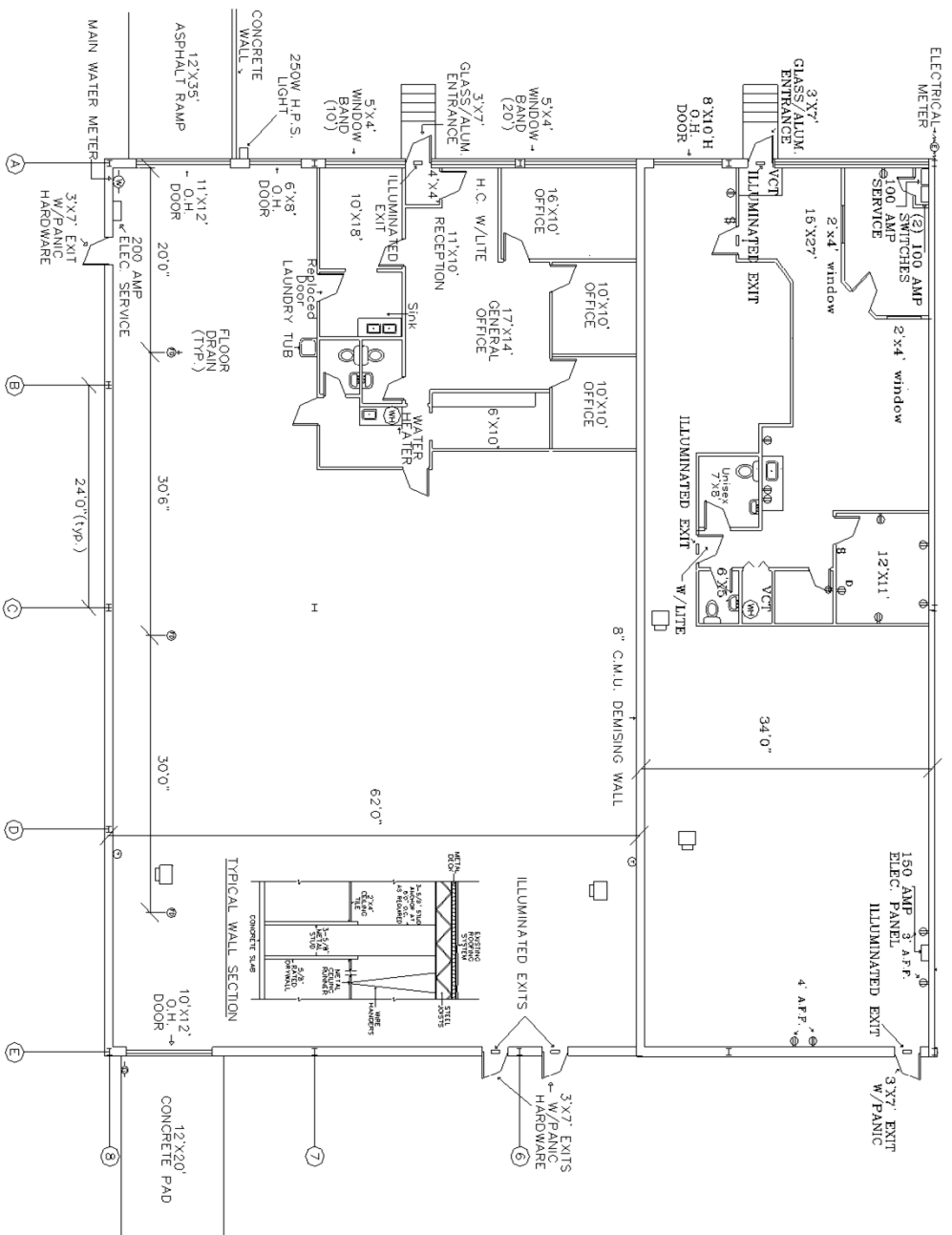
### MISCELLANEOUS

- Ample truck access and maneuvering
- 4 ft. high loading docks
- 24 hour, 7 day a week access



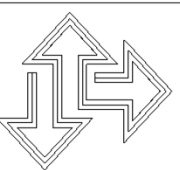
**Contact** Meredith Calfe – Pierre Brun - **T** 412-361-4509 **F** 412-361-4790 - **Internet** [www.jendoco-re.com](http://www.jendoco-re.com)

All information furnished regarding properties for rent or sale are subject to errors, omissions, change of price or rental and change or withdraw without notice. Rental terms, all dimensions and specifications are approximate and subject to change without notice.



ALL INFORMATION ON THIS DRAWING MUST BE FIELD VERIFIED FOR ACCURACY. OWNER ASSUMES NO LIABILITY FOR INFORMATION UTILIZED FROM THIS DOCUMENT.

9,300 SQUARE FEET TOTAL AREA  
2,389 SQUARE FEET FINISHED AS OFFICE



**PITTSBURGH BUSINESS PARKS**  
*CAD Design Team*

2000 Lincoln Road  
Pittsburgh, PA 15235

Phone: (412) 361 - 4509  
Fax: (412) 361 - 4790

PARKWAY WEST IND. PARK

SCALE: 1/8"=1'      APPROVED BY: SAMDOZ INC.      DRAWN BY: PB  
DATE: 5/22/25      REVISED

PWB-1201&1204



NORTH